

Supplementary Materials

# Assessing Future Water Demand and Associated Energy Input with Plausible Scenarios for Water Service Providers (WSPs) in Sub-Saharan Africa

Pauline Macharia <sup>1,\*</sup>, Nzula Kitaka <sup>2</sup>, Paul Yillia <sup>3</sup> and Norbert Kreuzinger <sup>1</sup>

<sup>1</sup> Institute for Water and Resource Management, Faculty of Civil Engineering, Vienna University of Technology, Karlsplatz, 1040 Vienna, Austria; norbkreu@iwag.tuwien.ac.at

<sup>2</sup> Biological Sciences Department, Faculty of Sciences, Egerton University, P.O. Box 536-20115, Egerton, Kenya; nkitaka@egerton.ac.ke

<sup>3</sup> Water Security Research Group, Biodiversity and Natural Resources Program, International Institute for Applied Systems Analysis (IIASA), Schlossplatz 1, 2361 Laxenburg, Austria; yillia@iiasa.ac.at

\* Correspondence: macharia.pauline@yahoo.com

**Citation:** Macharia, P.; Kitaka, N.; Yillia, P.; Kreuzinger, N. Assessing Future Water Demand and Associated Energy Input with Plausible Scenarios for Water Service Providers (WSPs) in Sub-Saharan Africa. *Energies* **2021**, *14*, 2169. <https://doi.org/10.3390/en14082169>

Academic Editors: Helena Ramos and Amparo López Jiménez

Received: 15 March 2021

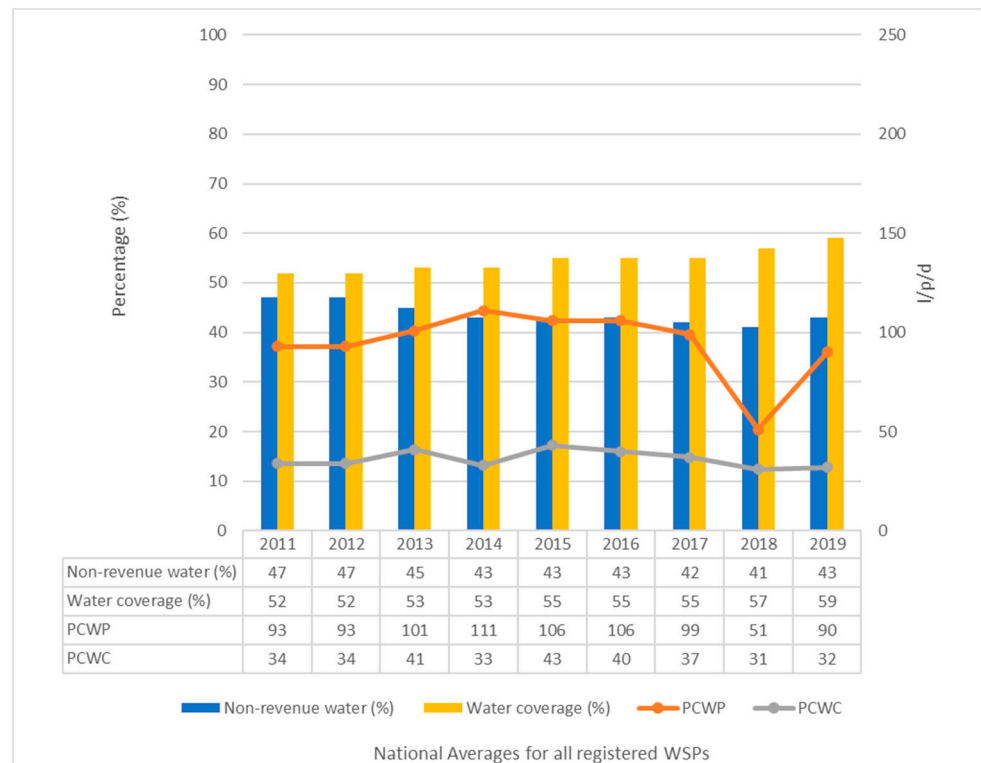
Accepted: 8 March 2021

Published: 13 April 2021

**Publisher's Note:** MDPI stays neutral with regard to jurisdictional claims in published maps and institutional affiliations.



**Copyright:** © 2021 by the authors. Submitted for possible open access publication under the terms and conditions of the Creative Commons Attribution (CC BY) license (<http://creativecommons.org/licenses/by/4.0/>).



**Figure S1.** Trends of NRW, Water Coverage and per capita water production and consumption for all registered WSPs in Kenya.

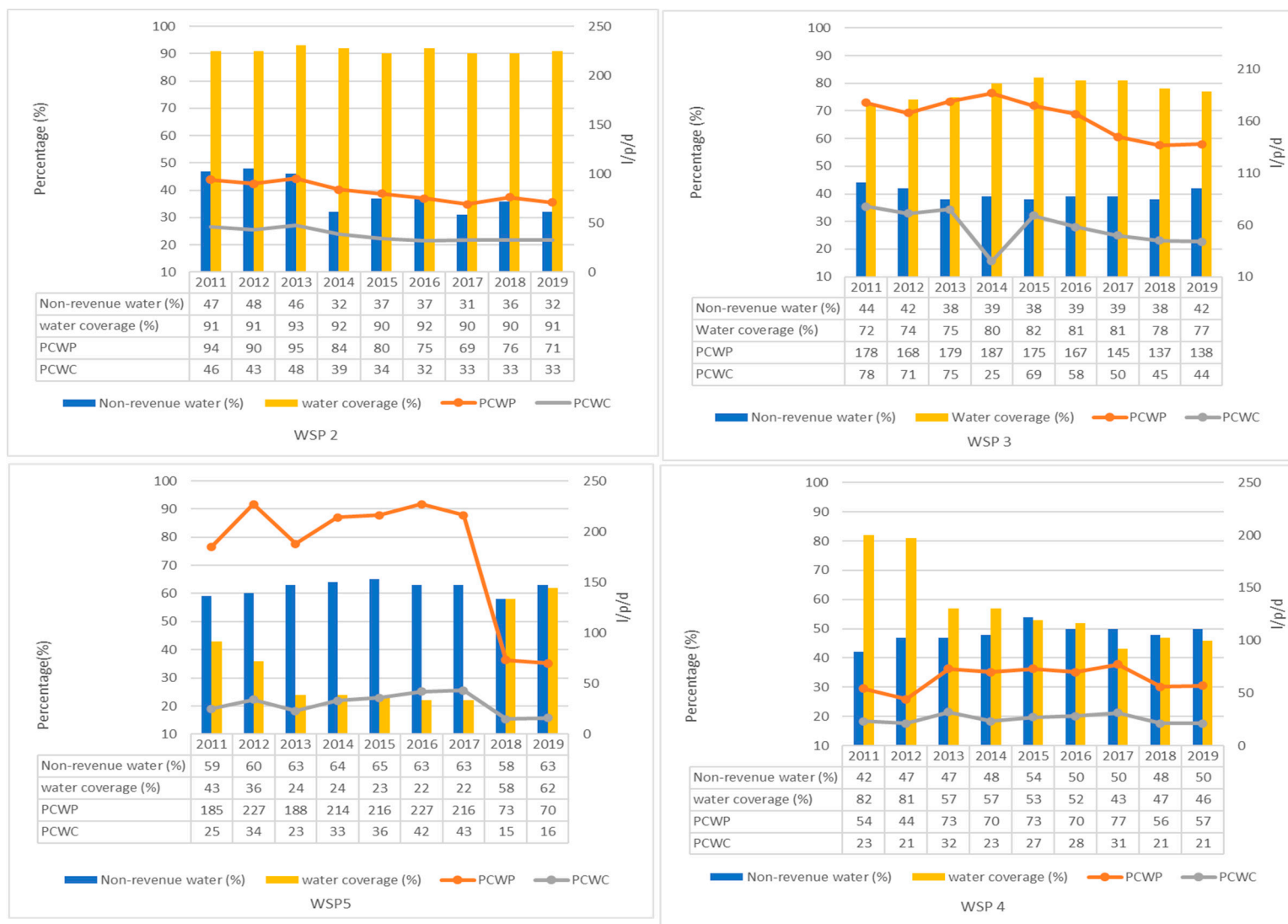
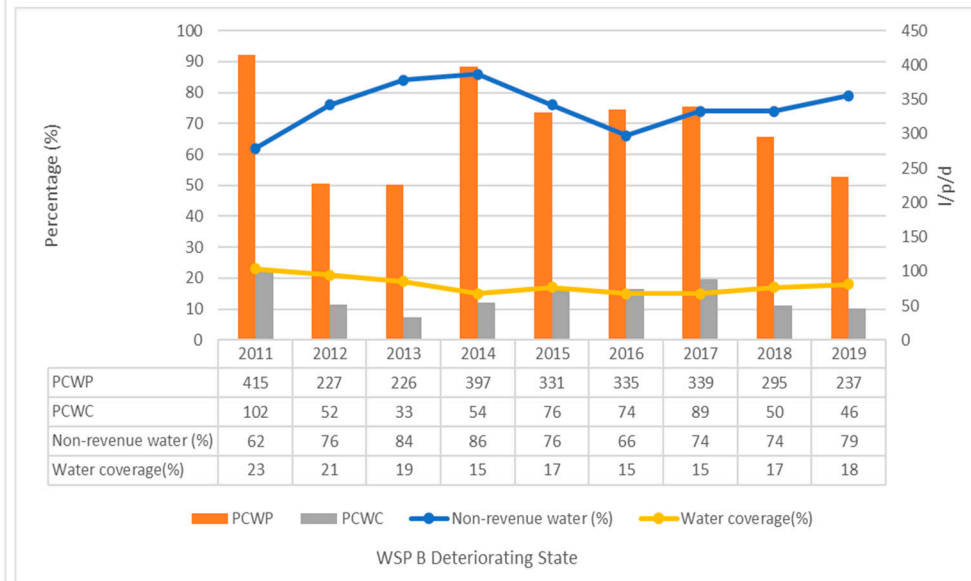
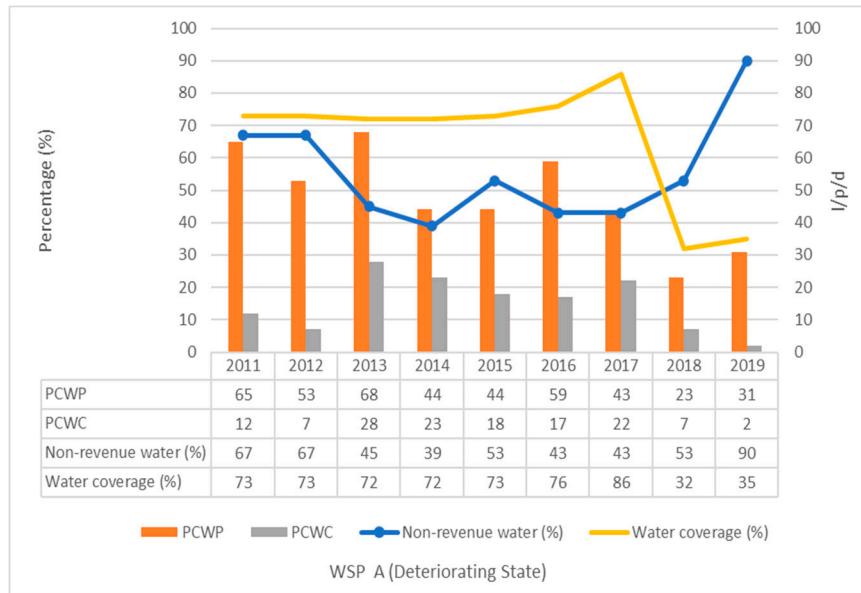


Figure S2. Nine-year trend of selected parameters among selected WSPs. Compiled from WSP performance Reports available at [www.wasreb.go.ke](http://www.wasreb.go.ke).



**Figure S3.** Trends of selected parameters in two additional WSPs illustrating deteriorating water losses, water coverage and per capita water production and consumption. Compiled from WSP performance Reports available at [www.wasreb.go.k](http://www.wasreb.go.k).