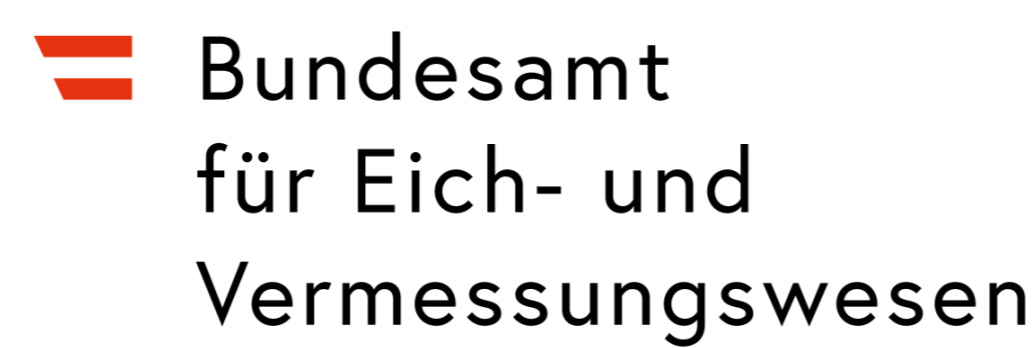


Lisa Kern, Leo Baldreich, Johannes Böhm, Sigrid Böhm, Jakob Gruber, Andreas Hellerschmied, Frédéric Jaron, Hana Krásná, David Mayer, Axel Nothnagel, Olivia Panzenböck, Sofie Steinmetz and Helene Wolf
 Vienna University of Technology, Department of Geodesy and Geoinformation, Research Unit Higher Geodesy, Vienna, AUSTRIA
 E-mail: lisa.kern@tuwien.ac.at

I. INTRODUCTION

The **Vienna Center for VLBI (Very Long Baseline Interferometry)** is jointly operated by TU Wien and the Federal Office of Metrology and Surveying (BEV) in Austria.

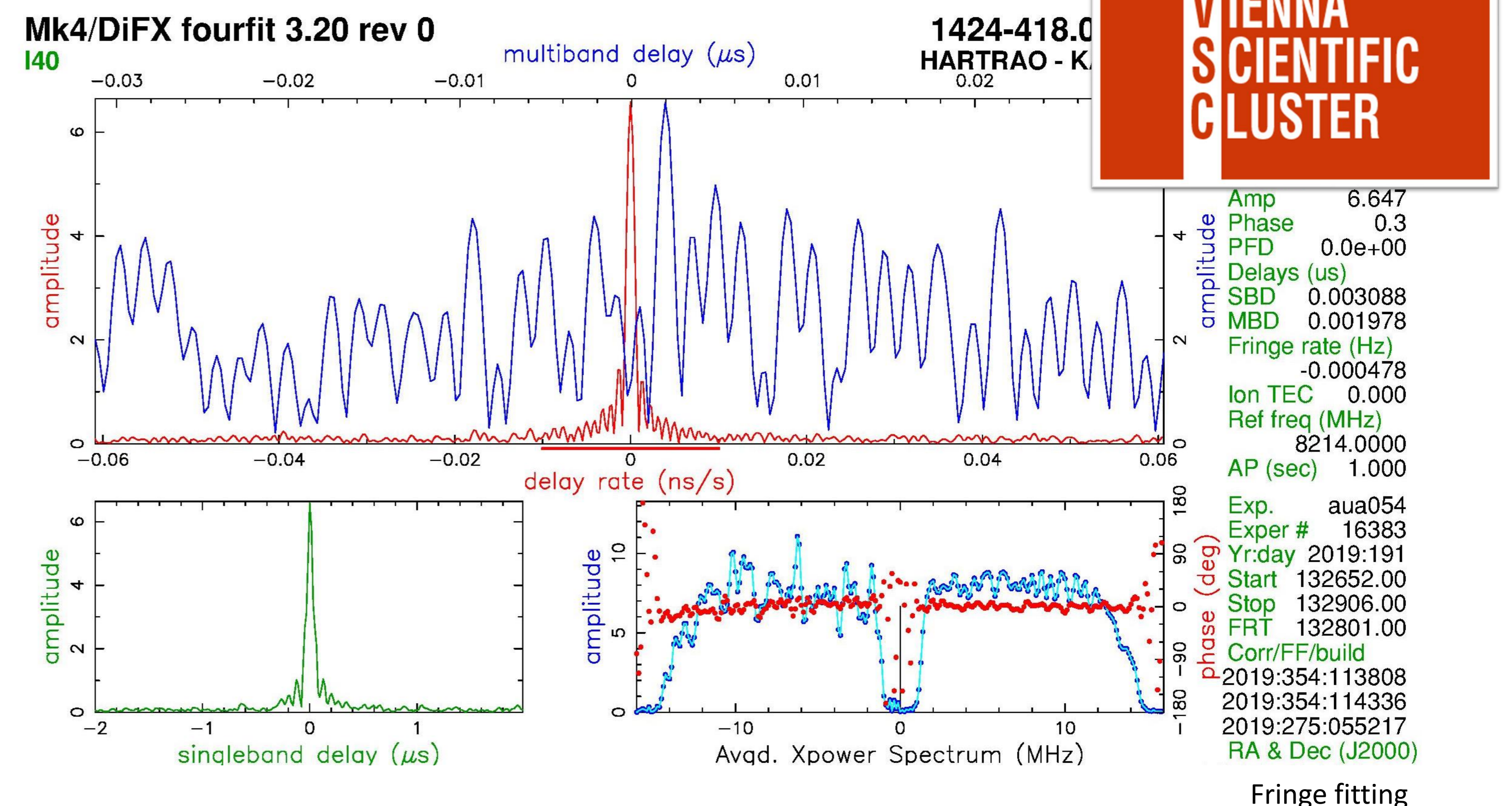


At the Vienna Center for VLBI we can independently conduct a VLBI experiment from start to finish: in our **operation center** we are able to plan VLBI observations (VieSched++), after the observation, the recorded data is correlated (**correlation center**) and analysed (**analysis center**) using the state-of-the-art Vienna VLBI and Satellite Software (short VieVS) developed at TU Wien.



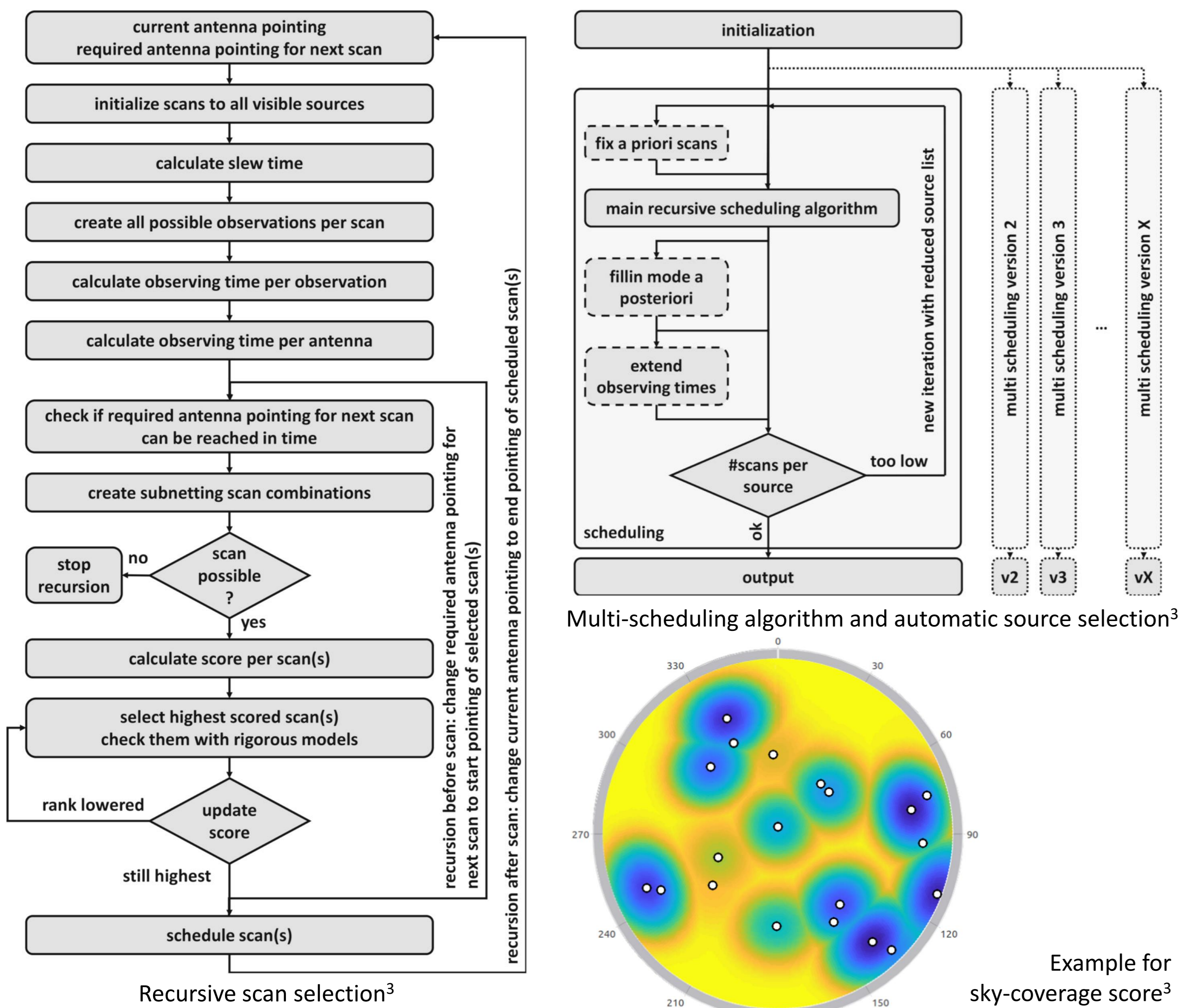
III. CORRELATION CENTER

... processing raw data records to derive delay observables



II. OPERATION CENTER

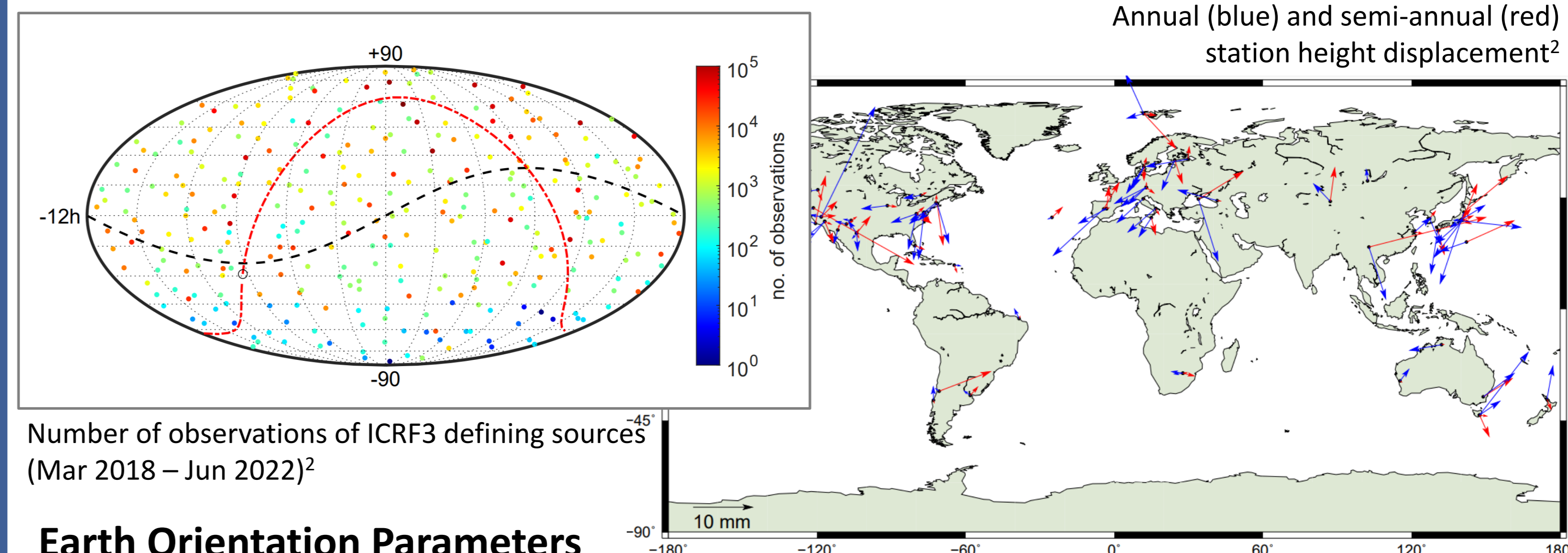
... generating highly sophisticated VLBI observation schedules



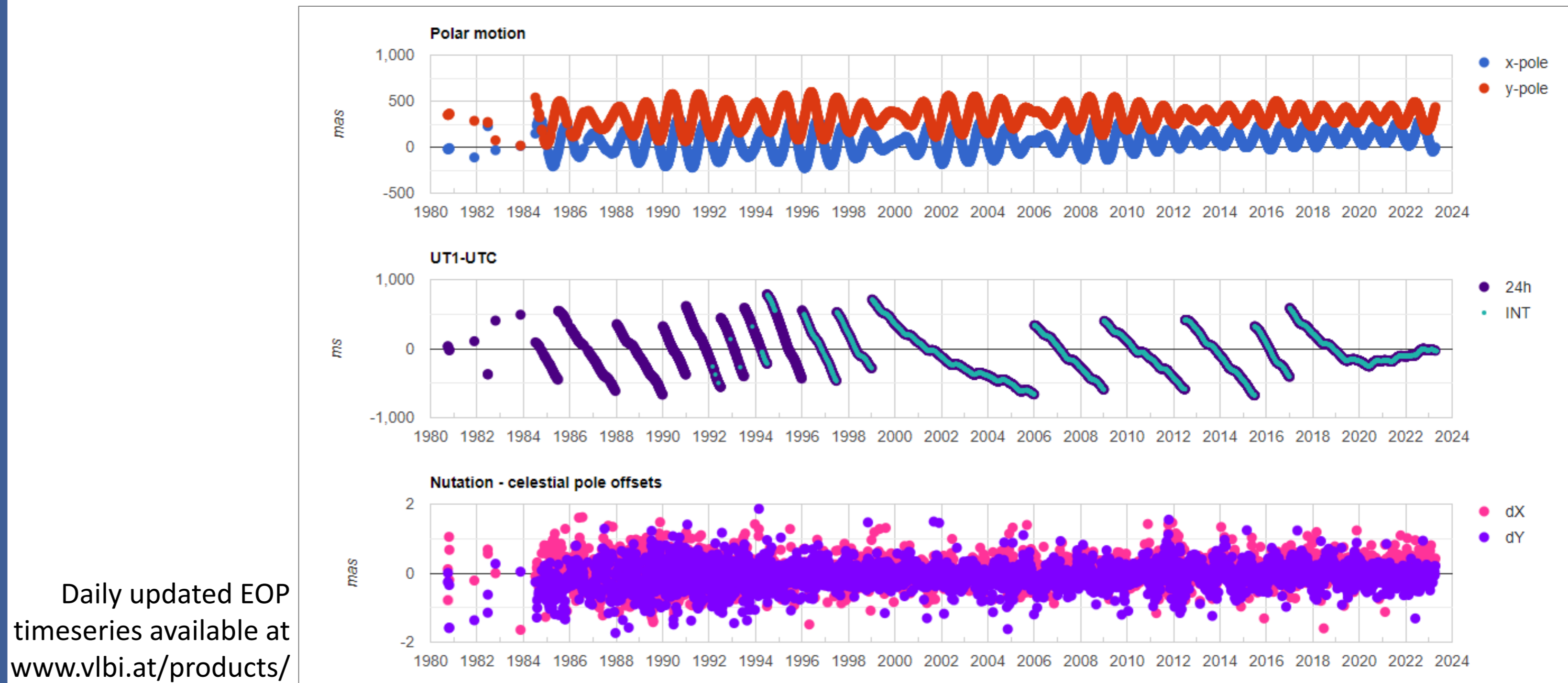
IV. ANALYSIS CENTER

... estimating geodetic products

Celestial and Terrestrial Reference Frames



Earth Orientation Parameters



REFERENCES

- ¹S. BÖHM, J. BÖHM, J. GRUBER, L. KERN, J. MCCALLUM, L. MCCALLUM, T. MCCARTHY, J. QUICK, M. SCHARTNER, PROBING A SOUTHERN HEMISPHERE VLBI INTENSIVE BASELINE CONFIGURATION FOR UT1 DETERMINATION, EARTH, PLANETS AND SPACE, 74(118), 2022
- ²H. KRÁSNÁ, L. BALDREICH, J. BÖHM, S. BÖHM, J. GRUBER, A. HELLERSCHMIED, F. JARON, L. KERN, D. MAYER, A. NOTHNAGEL, O. PANZENBÖCK, H. WOLF, VLBI CELESTIAL AND TERRESTRIAL REFERENCE FRAMES VIE2022B, ASTRONOMY & ASTROPHYSICS (ACCEPTED), 2023
- ³M. SCHARTNER, J. BÖHM, VIESCHED++: A NEW VLBI SCHEDULING SOFTWARE FOR GEODESY AND ASTROMETRY, PUBLICATIONS OF ASTRONOMICAL SOCIETY OF THE PACIFIC, 131(1002), 2019

