



Supplementary Material

Human Health Risk Assessment by Dietary Intake and Spatial Distribution Pattern of Polybrominated Diphenyl Ethers and Dechloran Plus from selected cities of Pakistan

Adeel Mahmood ^{1,5}, Jabir Hussain Syed ², Waseem Raza ³, Amtul Bari Tabinda ⁴, Andleeb Mehmood ³, Jun Li ⁵, Gan Zhang ⁵ and Mudassar Azam ^{6,*}

¹Department of Environmental Sciences, Faculty of Natural Sciences, GC Women University, Sialkot and Pakistan;

²Department of Meteorology, COMSATS University, Islamabad Tarlai Kalan, Park Road Islamabad 45550 Pakistan and

³State Key Laboratory of Fine Chemicals, Dalian University of Technology, 116024, China;

⁴Sustainable Development Study Centre, Government College University, Lahore, Pakistan;

⁵State Key Laboratory of Organic Geochemistry, Guangzhou Institute of Geochemistry, Chinese Academy of Sciences, Guangzhou 510640 and China;

⁶Institute of Chemical, Environmental and Bio Science Engineering, TU WIEN. Austria

Corresponding Author: mudassar.azam@tuwien.ac.at

Table 1. Study area to demonstrate the samples and locations with the reference of map in Figure 1.

	Types of samples	Sampling area	Sampling sites
1.	Agricultural area soil	KPK	S1, S2 and S3
2.	Dust	Punjab	S4, S5, S6, S7, S8, S9, S10 and S11
3.	Cereal crop (wheat)	Control sites in Punjab and KPK	C1 (S13) and C2 (S12)

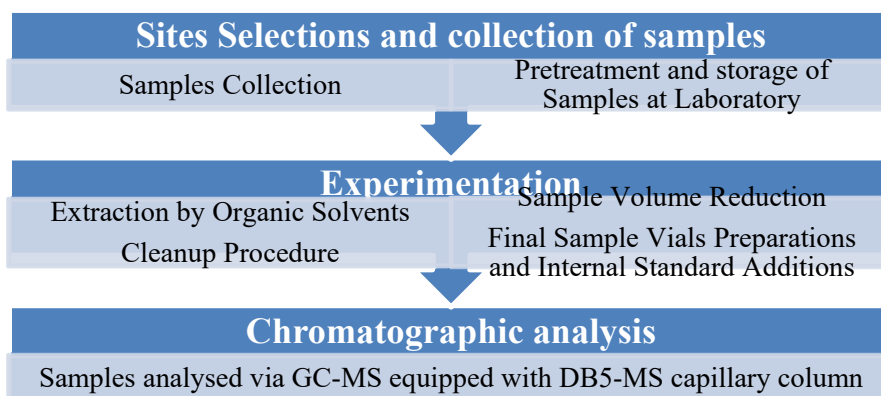


Figure S1. Flowchart showing the Sample preparations, cleanup, extraction and analysis procedure

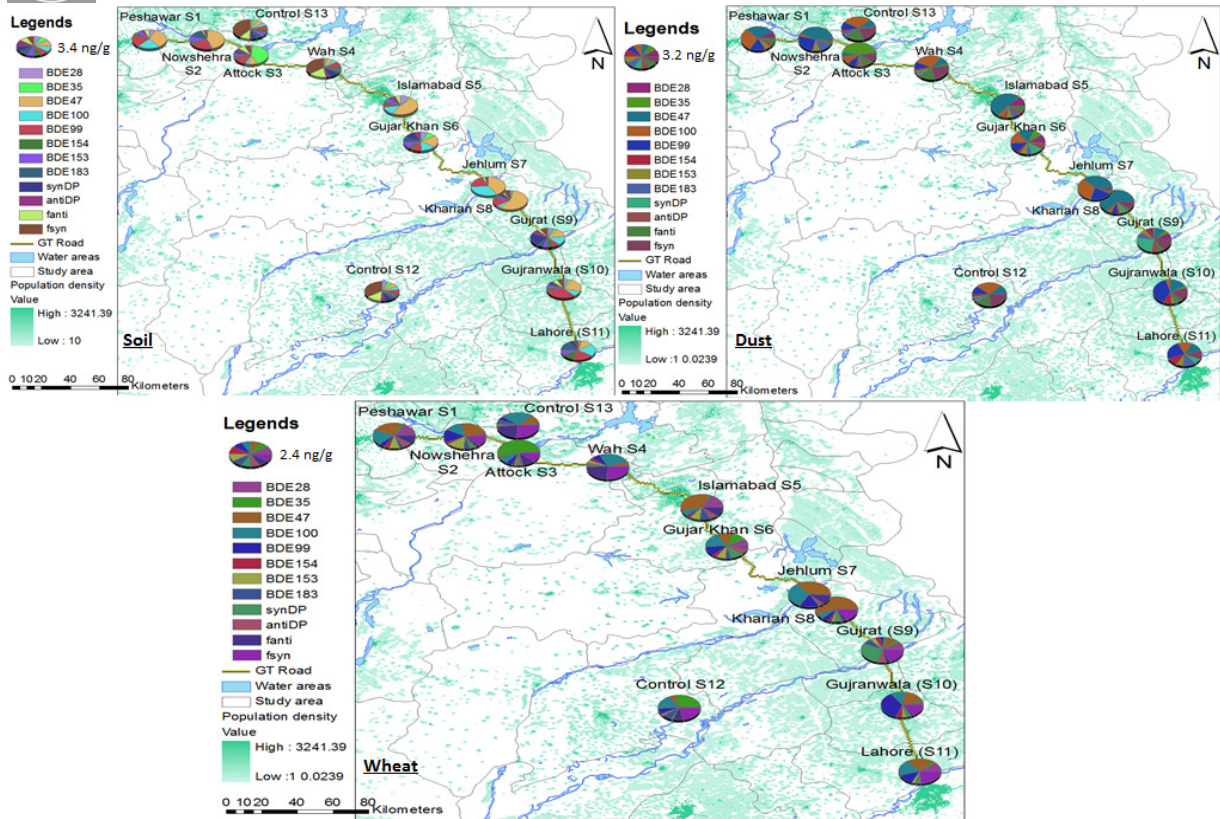


Figure S2. Overall distribution and levels of each detected congener along each site of the study area